

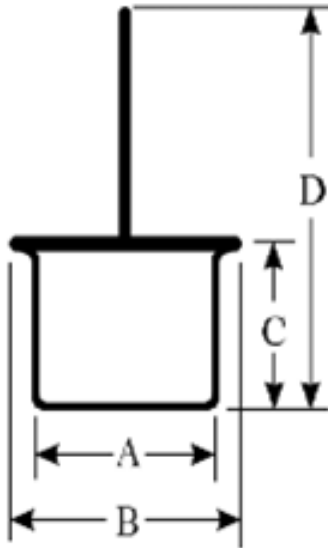
# DIGITRON SEMICONDUCTORS

## MECHANICAL CASE OUTLINE PACKAGE DIMENSIONS

DATE 20 JAN 07

### CASE 1.5MM PRESSFIT

<b>CASE</b>	1.5MM PRESSFIT
<b>MARKING</b>	ALPHA-NUMERIC
<b>DGE1704E</b>	ANODE IS CASE -BLACK INSULATOR
<b>DGE1705E</b>	CATHODE IS CASE - RED INSULATOR
<b>WEIGHT</b>	2.5 GRAMS (APPROXIMATE)



	1.5MM PRESSFIT			
	Inches		Millimeters	
	Min	Max	Min	Max
A	0.341	0.345	8.670	8.770
B	0.409	0.417	10.400	10.600
C	0.280	0.287	7.100	7.300
D	1.024	-	26.000	-
LD	0.055	0.063	1.400	1.600

This drawing is for reference only. Please refer to Digitron's published datasheet.